

Delft3D Wave dynamics

Functional Specifications

Version: 2.20
SVN Revision: 52614

17 March 2023

Delft3D Wave dynamics, Functional Specifications

Published and printed by:

Deltares
Boussinesqweg 1
2629 HV Delft
P.O. 177
2600 MH Delft
The Netherlands

telephone: +31 88 335 82 73
e-mail: info@deltares.nl
www: <https://www.deltares.nl>

For sales contact:

telephone: +31 88 335 81 88
e-mail: software@deltares.nl
www: <https://www.deltares.nl/software>

For support contact:

telephone: +31 88 335 81 00
e-mail: software.support@deltares.nl
www: <https://www.deltares.nl/software>

Copyright © 2023 Deltares

All rights reserved. No part of this document may be reproduced in any form by print, photo print, photo copy, microfilm or any other means, without written permission from the publisher: Deltares.

Contents

List of Figures	v
1 Introduction	1
1.1 Areas of application	1
1.2 Delft3D framework overview	1
1.3 Utilities	2
2 Wave module	3
2.1 Module description	3
2.2 Application areas	4
2.3 Coupling with other modules	4
3 Pre-processing and post-processing	5
3.1 Visualisation	5
3.1.1 GPP	5
3.1.2 QUICKPLOT	6
3.2 Grid generation	6
3.3 Grid data manipulation	7
3.4 Grid aggregation	8
3.5 Tidal analysis and comparison with observations	8
3.6 Tidal analysis and prediction	8
3.7 Nesting of Delft3D-FLOW models	9
3.8 Nesting of D-Water Quality models	9
3.9 Interfaces with other programs	10
3.9.1 Interface to GIS	10
3.9.2 Interface to Matlab	10
4 Hardware configuration	13

DRAFT

List of Figures

1.1	System architecture of Delft3D	1
3.1	Example QUICKPLOT figure: 3D view of bed level	6
3.2	Example QUICKPLOT figure: Depth-averaged velocity vectors and drying and flooding	7
3.3	Example QUICKPLOT figure: Depth-averaged velocity vectors and tidal ellips .	11

DRAFT

DRAFT

1 Introduction

Deltares has developed a unique, fully integrated modelling framework for a multi-disciplinary approach and 3D computations for coastal, river, lake and estuarine areas. It can carry out numerical modelling of flows, sediment transport, waves, water quality, morphological developments and ecology. It has been designed for experts and non-experts alike. The Delft3D framework is composed of several modules, grouped around a mutual interface, while being capable to interact with one another.

Delft3D can switch between the 2D vertically averaged and 3D mode simply by changing the number of layers. This feature enables to set up and investigate the model behaviour in 2D mode before going into full 3D simulations.

1.1 Areas of application

Delft3D can be applied, but is not limited, to the following areas of applications:

- ◇ flows due to tide, wind, density gradients and wave induced currents;
- ◇ propagation of directionally spreaded short waves over uneven bathymetries, including wave-current interaction;
- ◇ advection and dispersion of effluents;
- ◇ online morphodynamic computations (local scour, short time and length scales);
- ◇ sediment transport of cohesive and non-cohesive sediment;
- ◇ water quality phenomena including ecological modelling, the prediction of heavy metal concentrations, interaction with organic and inorganic suspended sediment, interaction between the water and bottom phase (such as sediment oxygen demand), algae blooms;
- ◇ particle tracking, including oil spill and dredging plume modelling;
- ◇ initial and/or dynamic (time varying) 2D-morphological changes, including the effects of waves on sediment stirring and bed-load transport.

1.2 Delft3D framework overview

Delft3D is composed of a number of modules (see [Figure 1.1](#)), each addressing a specific domain of interest, such as flow, near-field and far-field water quality, wave generation and propagation, morphology and sediment transport, together with pre-processing and post-processing modules. All modules are dynamically interfaced to exchange data and results where process formulations require. In the following chapters these modules are described in more detail.

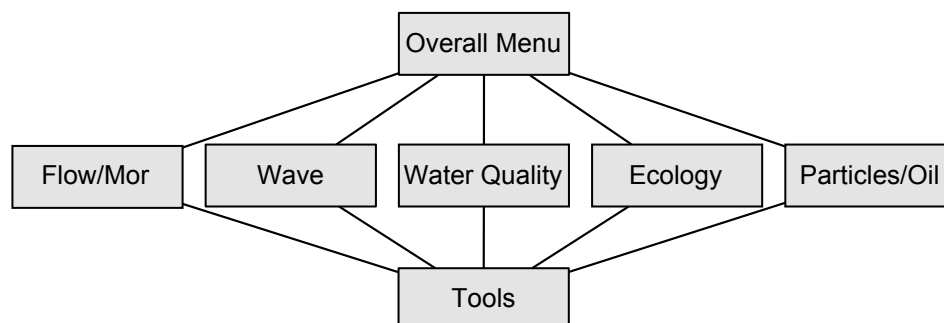


Figure 1.1: System architecture of Delft3D

All features are embedded in Graphical User Interface suitable for Linux or the MS Windows. An application (model) can be completely defined, inspected and analysed through a menu-driven, user-friendly, graphical interface.

The basic processes covered by each of the modules are:

Delft3D-FLOW and MOR 2D and 3D hydrodynamic, salinity, temperature, transport and online sediment transport and morphology
Delft3D-WAVE short wave propagation (using SWAN)
D-Water Quality general water quality
Delft3D-SED cohesive and non-cohesive sediment transport
Delft3D-ECO complex eutrophication and ecological modelling
D-WAQ PART particle tracking, oil spill modelling

1.3 Utilities

The following utility programs are available for pre-processing and post-processing:

RGFGRID: for generating orthogonal curvilinear grids, in Cartesian or spherical co-ordinates
QUICKIN: for preparing and manipulating grid oriented data, such as bathymetry, initial conditions for water levels, salinity, constituents and other parameters
Delft3D-TRIANA: for performing off-line tidal analysis of time-series generated by Delft3D-FLOW
Delft3D-TIDE: for performing tidal analysis on time series of measured water levels or velocities
GPP: for visualisation and animation of simulation results
Delft3D-QUICKPLOT: for visualisation and animation of simulation results
GISVIEW: ArcGIS extension to export GIS-coverages to Delft3D format and to read, visualise and process results from Delft3D (ArcGIS is not included)
Delft3D-MATLAB: user interface and Matlab functions to read Delft3D files and to visualise or process results in Matlab environment (Matlab is not included)
D-WAQ DIDO: interactive grid aggregation editor for coupling FLOW with WAQ models

For more information please contact:

e-mail: delft3d.info@deltares.nl
www: www.deltares.nl

2 Wave module

To simulate the evolution of random, short-crested wind-generated waves in coastal waters (which may include estuaries, tidal inlets, barrier islands with tidal flats, channels etc.) the wave module Delft3D-WAVE can be used. This wave module computes wave propagation, wave generation by wind, non-linear wave-wave interactions and dissipation, for a given bottom topography, wind field, water level and current field in waters of deep, intermediate and finite depth.

2.1 Module description

At present the wave model SWAN is available in the wave module of Delft3D. This is a third-generation wave model (Ris, 1997; Booij *et al.*, 1999). Where the previously available HISWA wave model was a second-generation wave model, (Holthuijsen *et al.*, 1989).

The SWAN model, which is an acronym for Simulating WAVes Nearshore, is a spectral third-generation wave model (see e.g. Holthuijsen *et al.* (1993); Ris (1997)). The SWAN model is the successor of the stationary second-generation HISWA model (Holthuijsen *et al.*, 1989) and has the great advantage, compared to HISWA, that the physics are explicitly represented with state-of-the-art formulations and that the model is unconditionally stable (fully implicit schemes). Moreover, the SWAN model can perform computations on a curvilinear grid (better coupling with the flow-module of Delft3D) and it can - for instance - generate output in terms of one- and two-dimensional wave spectra. In addition, the wave forces, as computed by SWAN on the basis of the gradient of the radiation stress tensor (instead of the dissipation rate as in HISWA), can be used as driving force to compute the wave-induced currents and set-up in the flow module.

The SWAN model is based on the discrete spectral action balance equation and is fully spectral (in all directions and frequencies). This latter implies that short-crested random wave fields propagating simultaneously from widely different directions can be accommodated. SWAN computes the evolution of random, short-crested waves in coastal regions with deep, intermediate and shallow water and ambient currents. The SWAN model accounts for (refractive) propagation - as the HISWA model - and represents the processes of wave generation by wind, dissipation due to white-capping, bottom friction and depth-induced wave breaking and non-linear wave-wave interactions (both quadruplets and triads) explicitly with state-of-the-art formulations. To avoid excessive computing time and to achieve a robust model in practical applications, fully implicit propagation schemes have been applied. It should be noted here, however, that although an efficient numerical technique has been implemented in SWAN the computing time for a typical wave computation may significantly be larger than that of the HISWA model. The SWAN model has successfully been validated and verified in laboratory and (complex) field cases (see e.g. Ris (1997); Ris *et al.* (1999)). It is noted that the SWAN model (as the HISWA model) does not account for diffraction effects.

The SWAN model has been developed at Delft University of Technology (the Netherlands) and where it is undergoing further enhancements. It is specified as the new standard for nearshore wave modelling and coastal protection studies. Therefore, Deltares has integrated the SWAN model into Delft3D and is applying SWAN in its research and consultancy projects. The SWAN model has been released under public domain.

You can download the source code, documentation and installation guide lines from the SWAN-website: <http://swan.ct.tudelft.nl>. User support is provided by the Delft University of Technology. As agreed with the SWAN group Deltares can provide the SWAN version that is currently supported in Delft3D-WAVE. Upgrades must be downloaded from the SWAN website.

2.2 Application areas

The wave module can be used for harbour and offshore installation design and for coastal development and management related projects. It can also be used as a wave hindcast model. Typical areas for the application of the wave module lie in the range between 2 by 2 km to 50 by 50 km.

The wave module can optionally be coupled with the other modules of Delft3D. In this way an efficient and direct coupling is obtained between e.g. the flow module (wave driven currents) and the sediment transport module (stirring by wave breaking).

2.3 Coupling with other modules

The wave computations are carried out in Delft3D on a regular rectilinear grid or a curvilinear grid. The curvilinear grid can be the same as the grid used in the hydrodynamic module Delft3D-FLOW. The Delft3D system will automatically transfer all the relevant information to and from (2-way coupling) the hydrodynamic module Delft3D-FLOW, which simulates the flow on a curvilinear grid. The curvilinear grid can be generated with the grid generator RGFGRID .

3 Pre-processing and post-processing

In this chapter several pre-processing and post-processing programs available in Delft3D are described in some details. These programs concern visualisation, grid generation, manipulation of grid related data and data analysis and manipulation.

3.1 Visualisation

3.1.1 GPP

The general post-processor (GPP) module of Delft3D allows uniform access to all kinds of data files to select and visualise simulation results and measurement data. More specifically the program allows to:

- ◇ select the map and/or time histories you want to visualise;
- ◇ select the lay-out and composition of the plot figure to be produced;
- ◇ select the type of output medium, i.e. screen for inspection, plotter or printer for hard copy output.

The type of presentation depends on the character of the data set:

- ◇ vector plots for flow velocities, bottom shear stress and other vector quantities, with automatic or user-defined scaling of s -axis, y -axis and vector scale;
- ◇ time history plots, from a single run, from various runs in the same plot or simulation results in combination with measurement data. Depending on the data files, these can be typical hydrodynamic quantities, such as water levels, velocity magnitude and direction, but also water quality parameters like salinity, temperature and E.coli concentration. The scaling can be determined automatically or set by you;
- ◇ contour and isoline plots of scalar quantities like the depth, water levels or algae growth rates. Again you can choose automatic scaling or set the contour classes manually;
- ◇ vertical profiles for quantities defined on a three-dimensional grid;
- ◇ geometric plots of the grid itself, tidal flats, land boundaries;
- ◇ mass balances and limiting factors for displaying the details of water quality models.

Data sets can be plotted in any (sensible) combination, as long as there is a common coordinate system. Layouts may contain more than one viewport, allowing several independent plots on one page. It is noted that the overview above is by no means complete but it gives a general idea about the possibilities.

The program has been designed to be general enough to handle different kinds of underlying geometries and data files of widely varying formats.

The program is capable of producing high quality colour plots. It is also able to produce a plot file in various standard formats. At the same time a print-out of the results in ASCII format can be made, enabling the data to be imported in other post-processing programs.

For the use of ArcView and Matlab to visualise and further process Delft3D results, see Section 3.9.

3.1.2 QUICKPLOT

The post-processing program Delft3D-QUICKPLOT allows you to easily plot and animate data from most output files and some input files of Delft3D and several other software packages of WL | Delft Hydraulics (such as SOBEK and PHAROS). Furthermore, it supports some simple ASCII formats such that you can combine model output and measurement data in one plot, and it is possible to load bitmap data as a backdrop for your 1D or 2D plots.

Typical plots created using Delft3D-QUICKPLOT are 2DH or 2DV plots and time-series plots, although it also has basic support for 3D plots. Scalar results may be presented using contour lines, contour patches, grid cell based patches, interpolated continuous shades, coloured marker or value fields. Vector results may be presented as vectors, coloured vectors or normalised vectors or as scalar quantities by selecting a single component (e.g. x -component, y -component, magnitude, direction) of the vector.

Data sets can be linked to animate single or multiple data sets in a figure. Animation frames can be stored in various bitmap formats. Data sets can be exported to various in-house or 3rd party formats.

Delft3D-QUICKPLOT is a standalone program based on technology of The MathWorks Inc. It can be seamlessly integrated with the MATLAB environment via the Delft3D-MATLAB interface.

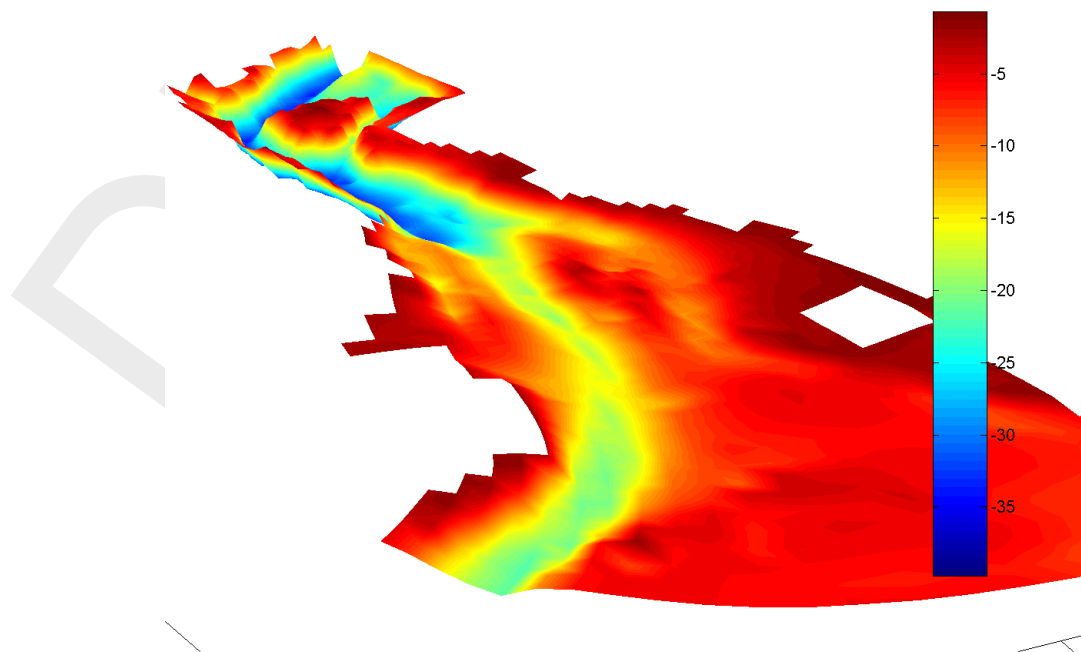


Figure 3.1: Example QUICKPLOT figure: 3D view of bed level

3.2 Grid generation

RGFGRID is a program to generate orthogonal, curvilinear grids of variable grid size, that are to be used in combination with each of the modules of the Delft3D suite. The grid-generator includes a graphical interface and an orthogonalisation module, providing easy control of the grid generation process.

RGFGRID supports the following features:

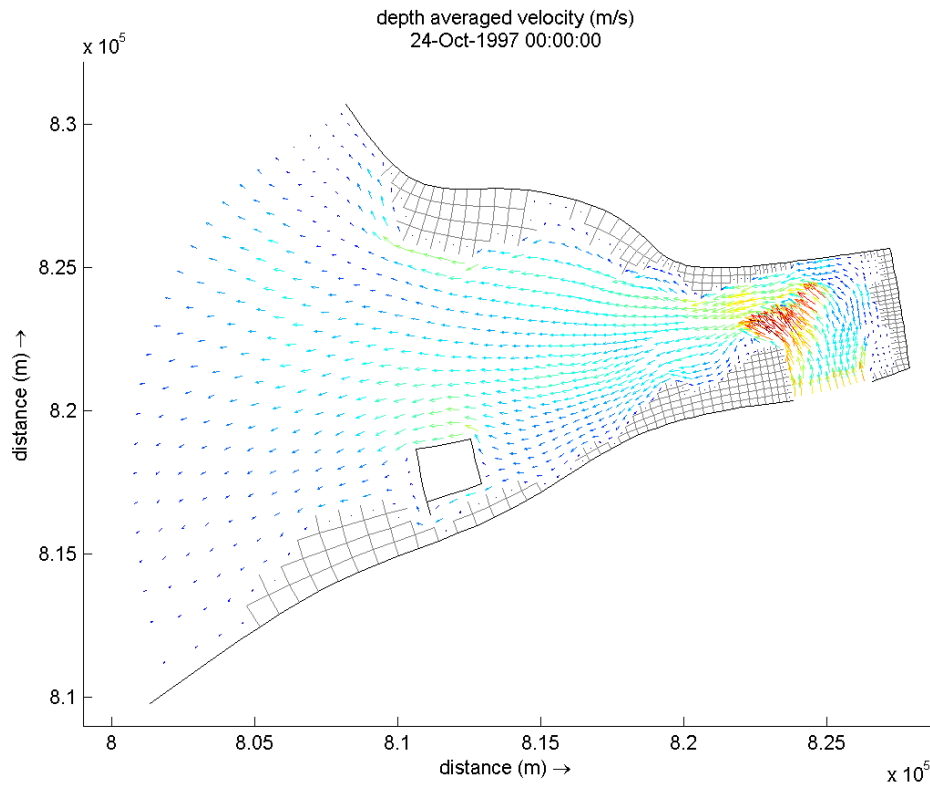


Figure 3.2: Example QUICKPLOT figure: Depth-averaged velocity vectors and drying and flooding

- ◇ graphical user interface;
- ◇ generation of grids in Cartesian or Spherical co-ordinate systems
- ◇ display of grid features as orthogonality, smoothness, aspect ration etc.;
- ◇ several user-functions have been implemented to provide easy control over the grid shape;
- ◇ keyboard and mouse driven events are supported;
- ◇ iterative way of working, each cycle providing more definition in the grid shape.
- ◇ generation of multi-domain interfaces.

3.3 Grid data manipulation

To create, visualise and modify grid based data, such as bathymetries, and other grid related data the program QUICKIN is provided. QUICKIN is used in combination with the modules of Delft3D.

QUICKIN supports the following features:

- ◇ graphical user interface;
- ◇ several interpolation options (averaging, triangulation, diffusion);
- ◇ suitable for different ratios of grid-density versus sample-density;
- ◇ various display possibilities: isolines, dots, perspective, etc.;
- ◇ implementation of various user-functions to provide easy control over the final bathymetry;
- ◇ sample data from different sources can be interpolated in sequence, thus, starting with the best quality data available, an optimal bathymetry can be created.
- ◇ Definition of dredge and dump sites with their characteristics.

3.4 Grid aggregation

The program DIDO enables you to span coarser, irregularly shaped, grid segments for water quality modelling, starting from the fine grid of e.g. the grid used by the hydrodynamic model. For ecological modelling with large numbers of state variables, a coarser schematisation, following ecological and transport separation lines rather than grid lines, is often preferable. The fine grid of the hydrodynamic model serves as input, integer multiples of the input grid are used for the description of the coarse grid. The procedure is fully mass-conserving. Aggregation is only supported in a plane surface.

DIDO provides the following features:

- ◇ zoom in locally;
- ◇ separate a working area from the remainder of the schematisation;
- ◇ aggregate regularly (e.g. every 2 segments in the one and 3 in the other direction);
- ◇ aggregate irregularly (by rubber band lines comparable to the bulls hide);
- ◇ fine tune by point and click on single elements;
- ◇ select a subset of the hydrodynamic area for water quality modelling;
- ◇ display information of a selected segment;
- ◇ save intermediate results on the fly;
- ◇ resume unfinished work from saved files;
- ◇ save the final result for water quality simulation.

The final result of DIDO will be used as input to the coupling program between the hydrodynamic module Delft3D-FLOW and the water quality module D-Water Quality enabling the latter to run on a coarser grid using the fine grid hydrodynamic database. Water quality simulations are converted back to the fine grid in post-processing software. This gives spatial plots with the fine resolution (although aggregated areas will still show equal concentration values).

3.5 Tidal analysis and comparison with observations

Analysis and interpretation of a hydrodynamic simulation in terms of tidal amplitudes and phases can be performed by the program Delft3D-TRIANA. Delft3D-TRIANA performs off-line tidal analyses on time-series of either water levels and/or velocities. Moreover, Delft3D-TRIANA compares the results from these analyses with observation data supplied by you. Amplitude ratios and phase differences as well as objective statistics are determined.

3.6 Tidal analysis and prediction

The program Delft3D-TIDE is used for the analysis of tidal recordings and the preparation of tidal predictions.

The main module TIDE/ANALYSIS performs tidal analysis on time-series of water levels or currents. A variety of features is included, such as:

- ◇ the coupling of closely positioned astronomical components;
- ◇ the simultaneous analysis of successive records of different instruments;
- ◇ the discrimination of sub-series to account for gaps in measurement recordings;
- ◇ the appreciation of linear trends and an accuracy analysis.

In a tidal analysis of a time-series of one year with a 10 minutes interval, 100 or more tidal constituents can be prescribed simultaneously. The constituents are selected from the internal database that contains 234 constituents that may be important at locations world-wide.

The module TIDE/FOURIER performs Fourier-analyses on any type of time-series. This feature can be used to investigate the series of residual levels or velocities which has been identified during the tidal analysis on remaining tidal components.

Using a set of tidal constants, such as computed in the analysis module, the TIDE/PREDICT module predicts water levels or tidal currents as a function of time.

The module TIDE/HILOW may provide the production of tide tables with the dates, times and heights of the High and Low Waters. Using a word-processor or desktop publishing software package, the basic tide tables can be processed further and combined with other relevant information like tidal stream data.

Whereas in the regular analysis part of the package you pre-define the constituents that will be considered, the program also features an option (TIDE/ASCON) to compute the astronomic arguments and node amplitude factors for all 234 internally defined constituents.

The package is accompanied with a comprehensive User Manual, exemplifying the use of the program and its scientific backgrounds. A number of examples is added in the form of input and data files.

3.7 Nesting of Delft3D-FLOW models

At the open boundaries of a Delft3D-FLOW model, boundary conditions are required for the vertical and/or horizontal tide and the substances if applicable. In case these open boundaries are located within a (coarser) overall Delft3D-FLOW model, then the overall model can be used to generate the boundary conditions for the detailed model. In this case we say the detailed model is nested within the overall model.

The procedure to generate nested boundary conditions consists of 3 steps:

- 1 Using the program Delft3D-NESTHD 1 a list of monitoring stations in the overall model, needed for the interpolation, will be generated. In addition to this, the program generates the nest administration, i.e. the link between the boundary support points in the detailed (or nested) model and the monitoring stations in the overall model.
- 2 Run the overall model with the list of monitoring stations generated by Delft3D-NESTHD 1.
- 3 The actual boundary conditions for the nested model are generated by Delft3D-NESTHD 2 using the history file of the overall model and the nest administration.

3.8 Nesting of D-Water Quality models

The transfer of data from an encompassing or 'overall' numerical model to an embedded or 'nested' numerical model is called nesting. In general the overall model has a coarse resolution of grid cells, whereas the nested model has a higher resolution. At the boundary locations of the nested model the results from the overall model are required as boundary conditions for the nested model. The boundary conditions can be water levels, currents, fluxes or discharges in case of hydrodynamic models, and water quality parameters in case of water quality models.

The procedure of nesting through concentrations between D-Water Quality (or D-WAQ PART) models is performed by the system D-WAQ NESTWQ. In this procedure two steps can be distinguished which are handled by separate subsystems:

- 1 D-WAQ NESTWQ 1, for the determination of nest segments and nest weights in the overall model. The concentrations at these segments are used by the next subsystem.

- 2 D-WAQ NESTWQ 2, for the generation of boundary conditions for the boundary segments in the nested model from the results at the nest segments in the overall model.

3.9 Interfaces with other programs

It should be emphasised that even though these extensions can be quite useful as a supplement to the Delft3D tools, real benefits are gained mostly if you are familiar with both the Delft3D environment and the external environment.

3.9.1 Interface to GIS

While pre-processing and post-processing can be done quite adequately using the specific tools offered by Delft3D, recently a link have been established with ArcView. The link is intended as a supplement to the existing tools rather than a replacement. It adds the ability to view and manipulate model results and model input in a different environment.

The link to ArcView implies:

- ◇ exporting a GIS line coverage as land boundary outline and depth data as contained in ArcInfo/ArcView map layers to a format suitable for RGFGRID and QUICKIN;
- ◇ importing the model grid and the corresponding depth field as generated by RGFGRID and QUICKIN, so that they can be presented in a geographical context;
- ◇ importing the grid-based model results (scalar and vector quantities) with a user interface quite similar to that of GPP in the ArcView environment for presentation or further analysis

All data files are read directly by this ArcView extension and stored as shape files. There is no need to convert or process the model result files.

3.9.2 Interface to Matlab

In a similar way as with GIS it is possible to import the results produced with Delft3D directly into Matlab. This gives the opportunity to visualise or use the results for further analysis using the facilities offered by Matlab.

The Delft3D-MATLAB interface allows you to seamlessly integrate the simplicity of simulation data access by Delft3D-QUICKPLOT with the flexibility of the MATLAB environment developed by The MathWorks Inc. The combination of these two tools allows you to use the full power of MATLAB for analysing, processing and visualising the simulation results.

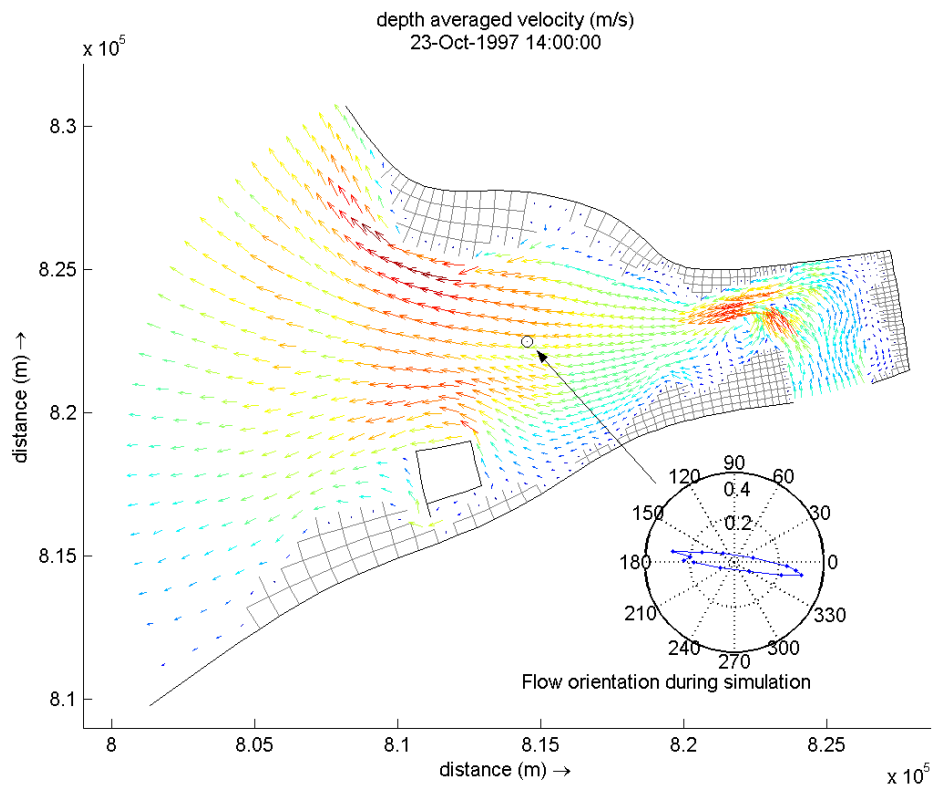


Figure 3.3: Example QUICKPLOT figure: Depth-averaged velocity vectors and tidal ellips

DRAFT

4 Hardware configuration

Delft3D and its accompanying programs is supported on the following platforms:

- ◇ Windows 32/64-bit platforms
- ◇ Linux Redhat 3.4

Configuration item	Minimal	Preferred
Processor	IA32, 1 GHz	IA32, 3 GHz or more
Internal memory	1024 MB	2 GB or more
Swap space	2.0 × internal memory	4.0 × internal memory
Hard disk	10 GB	80 GB or more
Monitor	17 inch colour	19 inch colour
Display	800 × 600 pixels 256 colours	1280 × 1024 pixels 16 million colours

Booij, N., R. Ris and L. Holthuijsen, 1999. "A third-generation wave model for coastal regions, Part I, Model description and validation." *Journal of Geophysical Research* 104 (C4): 7649–7666.

Deltares, 2016. "BIBTEX key with no entry, needed if no citations are made in the document."

Holthuijsen, L., N. Booij and T. Herbers, 1989. "A prediction model for stationary, short-crested waves in shallow water with ambient currents." *Coastal Engineering* 13: 23–54.

Holthuijsen, L., N. Booij and R. Ris, 1993. "A spectral wave model for the coastal zone." In *Proceedings of 2nd International Symposium on Ocean Wave Measurement and Analysis, New Orleans*, pages 630–641.

Ris, R., N. Booij and L. Holthuijsen, 1999. "A third-generation wave model for coastal regions, Part II: Verification." *Journal of Geophysical Research* 104 (C4): 7649–7666.

Ris, R. C., 1997. *Spectral Modelling of Wind Waves in Coastal Areas*. Communications on Hydraulic and Geotechnical Engineering, report 97-4. Delft University of Technology, Delft, The Netherlands. Ph.D. thesis.

DRAFT